



# MONTHLY MEMBERSHIP PROGRESS REPORT

District 27 B1

Results as of: 3/31/2016

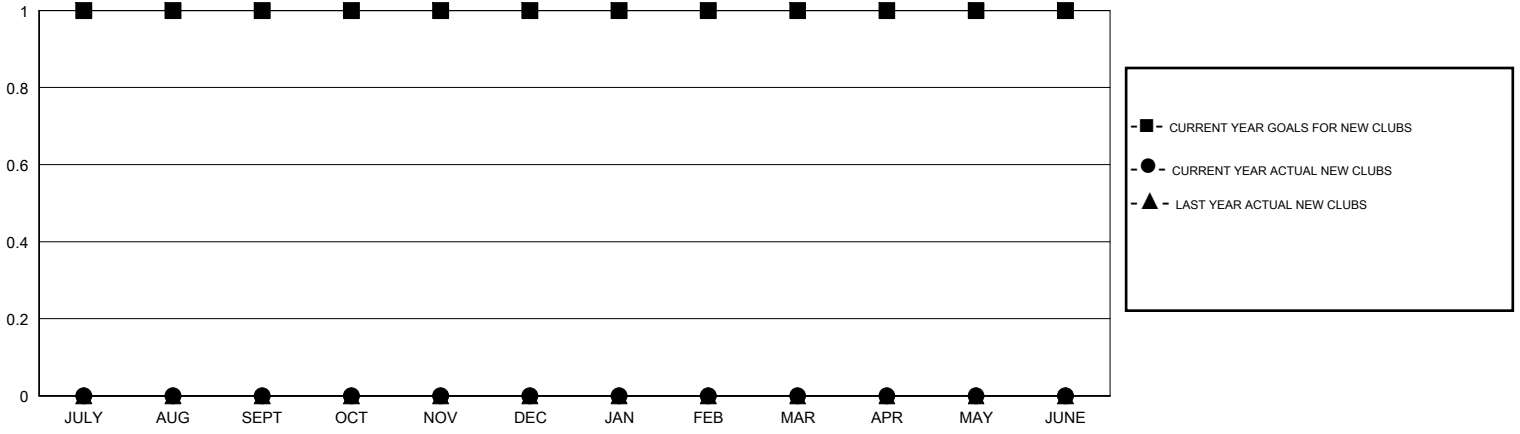
GMT: Judy Hankom

LOCATION WISCONSIN

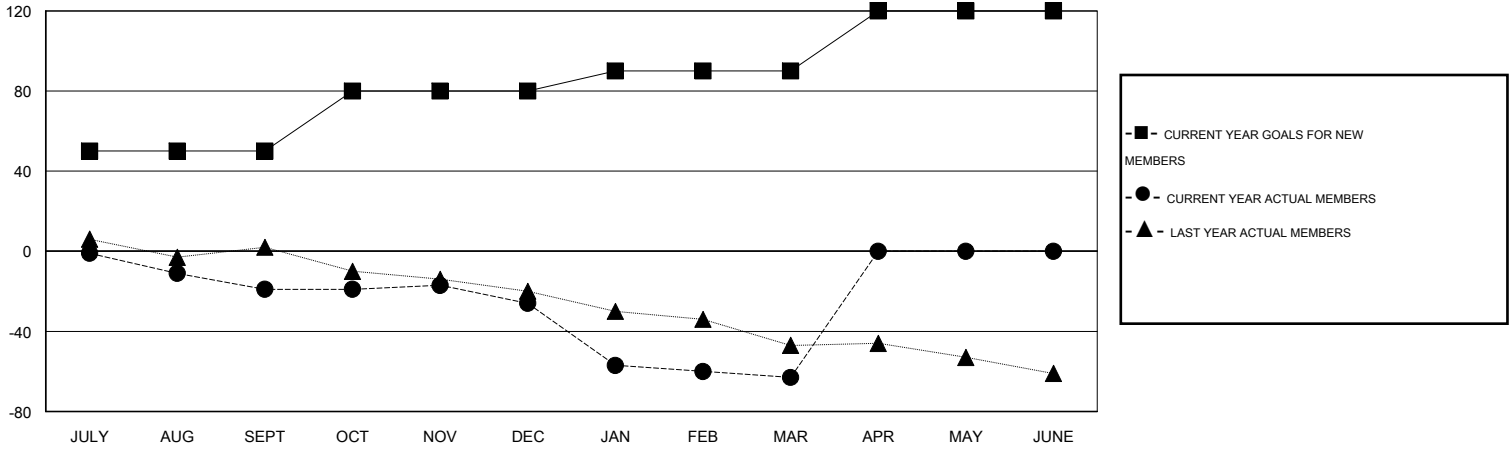
GMT CA 1

Clubs					Members				
RESULTS FOR 2015-2016					RESULTS FOR 2015-2016				
QUARTER	NEW CLUB GOAL	NEW CLUBS	DROPPED CLUBS	NET GAIN/LOSS	QUARTER	NEW MEMBER GOAL	CHARTER AND NEW MEMBERS ADDED	DROPPED MEMBERS	NET GAIN/LOSS
JULY/AUG/SEPT	1	0	0	0	JULY/AUG/SEPT	50	24	43	-19
OCT/NOV/DEC	0	0	0	0	OCT/NOV/DEC	30	26	33	-7
JAN/FEB/MAR	0	0	0	0	JAN/FEB/MAR	10	24	61	-37
APR/MAY/JUNE	0	0	0	0	APR/MAY/JUNE	30	0	0	0

GOALS AND ACTUAL NEW CLUBS CUMULATIVE



GOALS AND ACTUAL MEMBERS CUMULATIVE



DROPPED CLUBS: 0	33 CLUBS OF 70 ADDED 1 OR MORE NEW MEMBERS	<u>GENDER DISTRIBUTION</u> MALE 1,627 (81.43%) FEMALE 371 (18.57%)
<u>DROPPED MEMBERS</u> DECEASED 35 CLUB CANCELLED 0 OTHER 101 TOTAL 136	<a href="#">CLICK HERE FOR HEALTH ASSESSMENT DATA</a>	FAMILY UNIT MEMBERS 317 HEAD OF HOUSEHOLD 156 NON-HEAD OF HOUSEHOLD 161